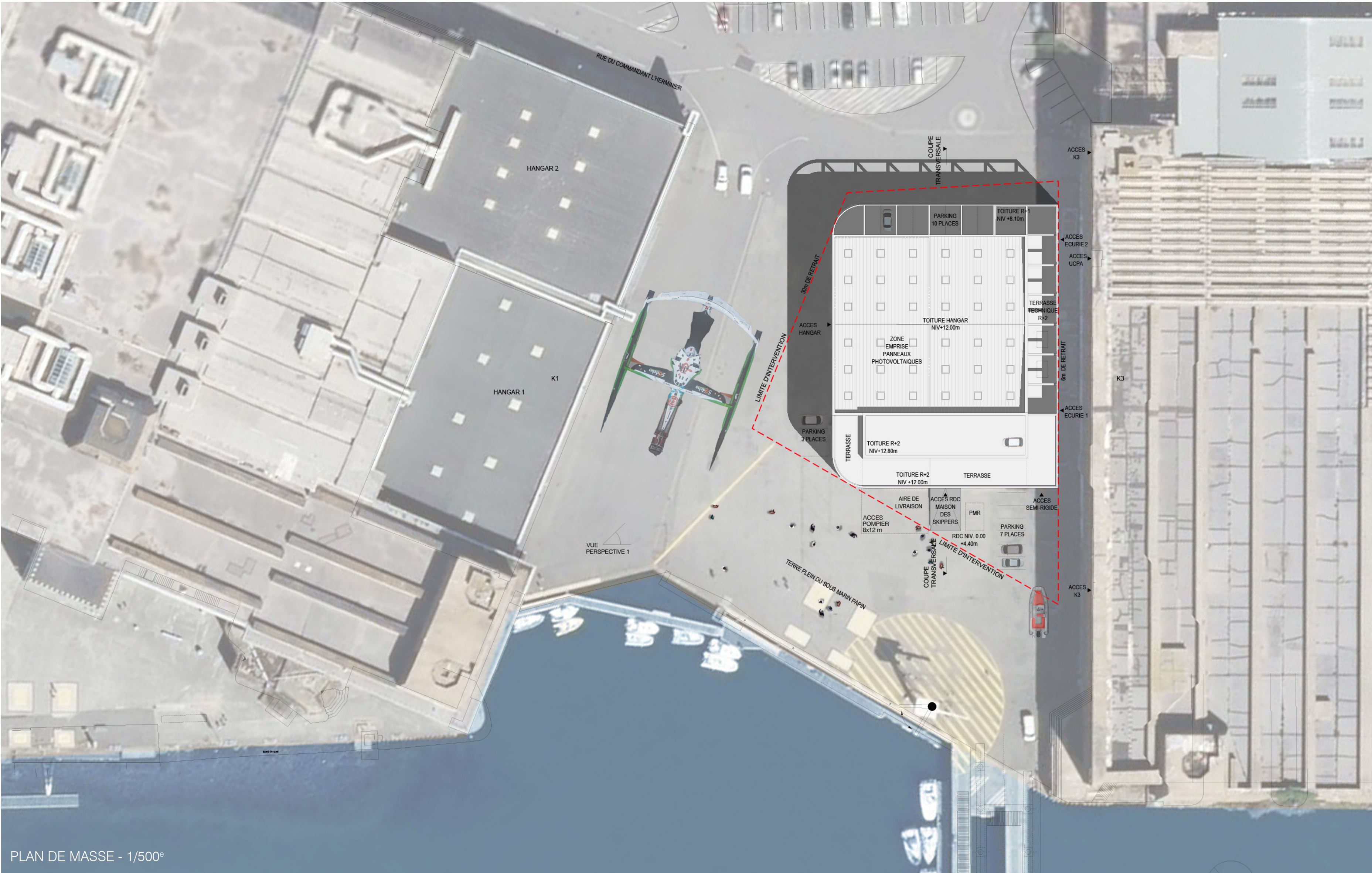
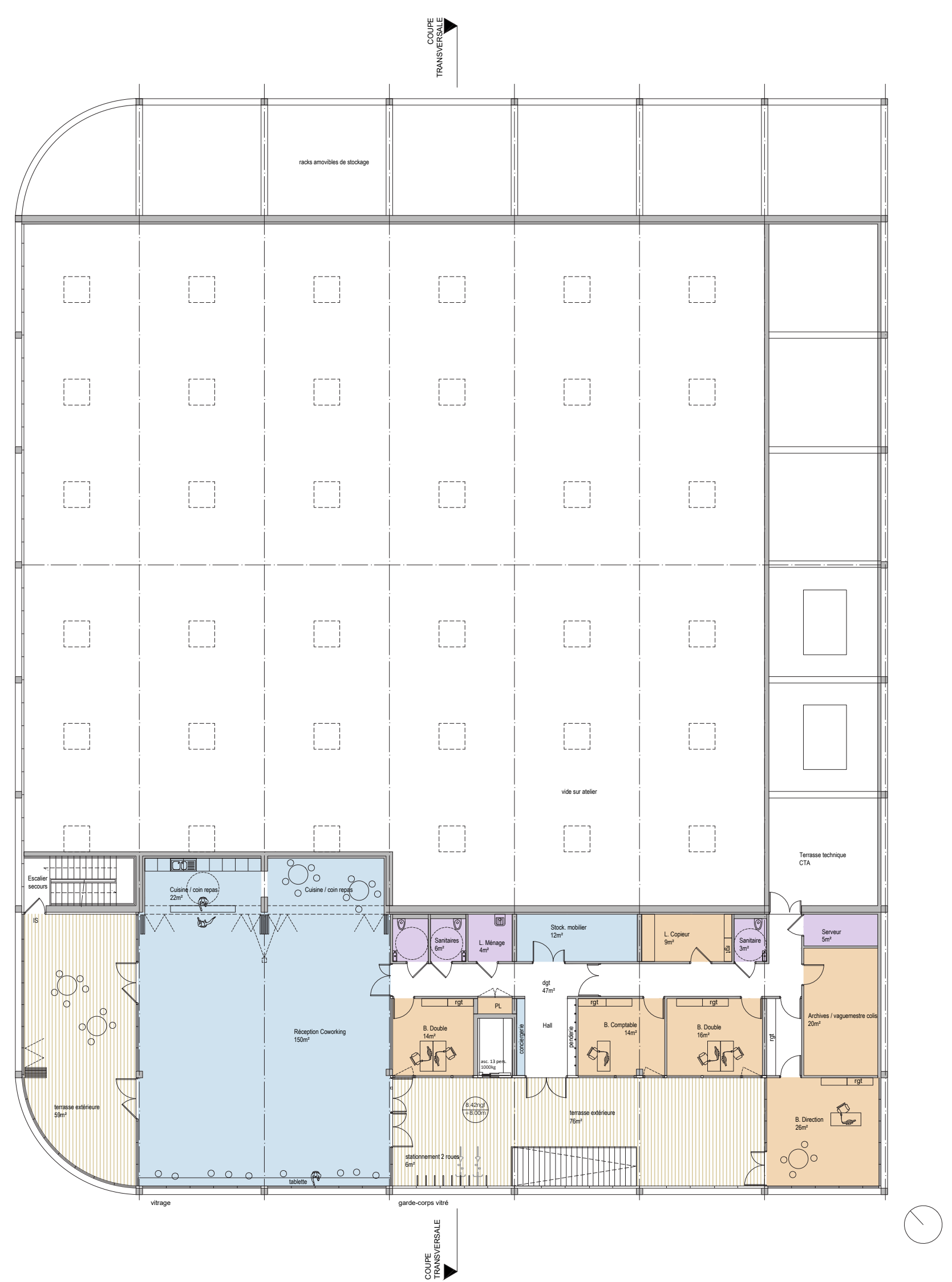




VUE PERSPECTIVE DEPUIS LES PONTS



PLAN DE MASSE - 1/500°

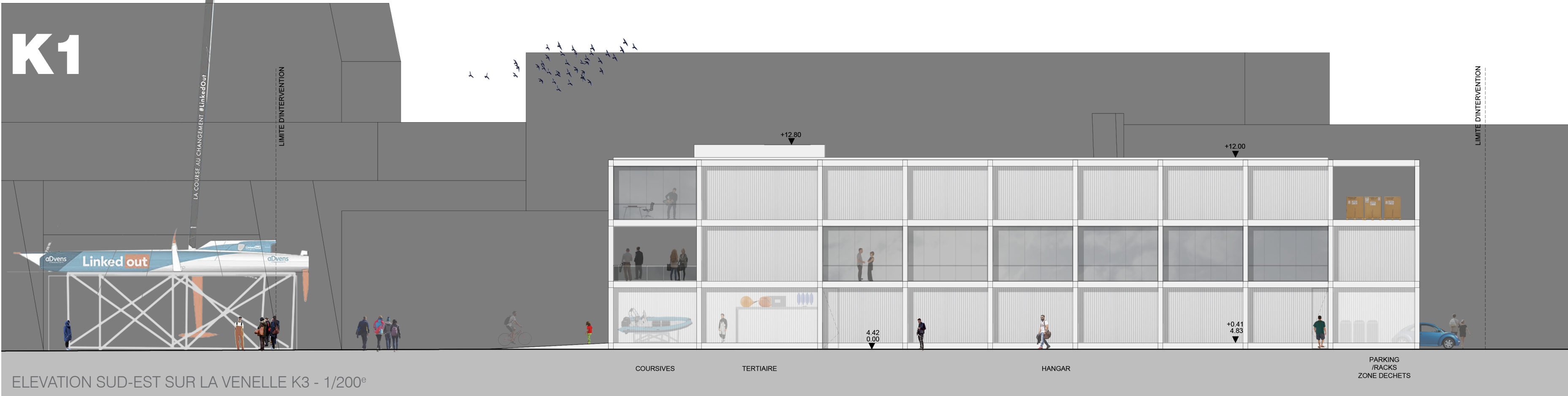


PLAN R+2 - 1/200°

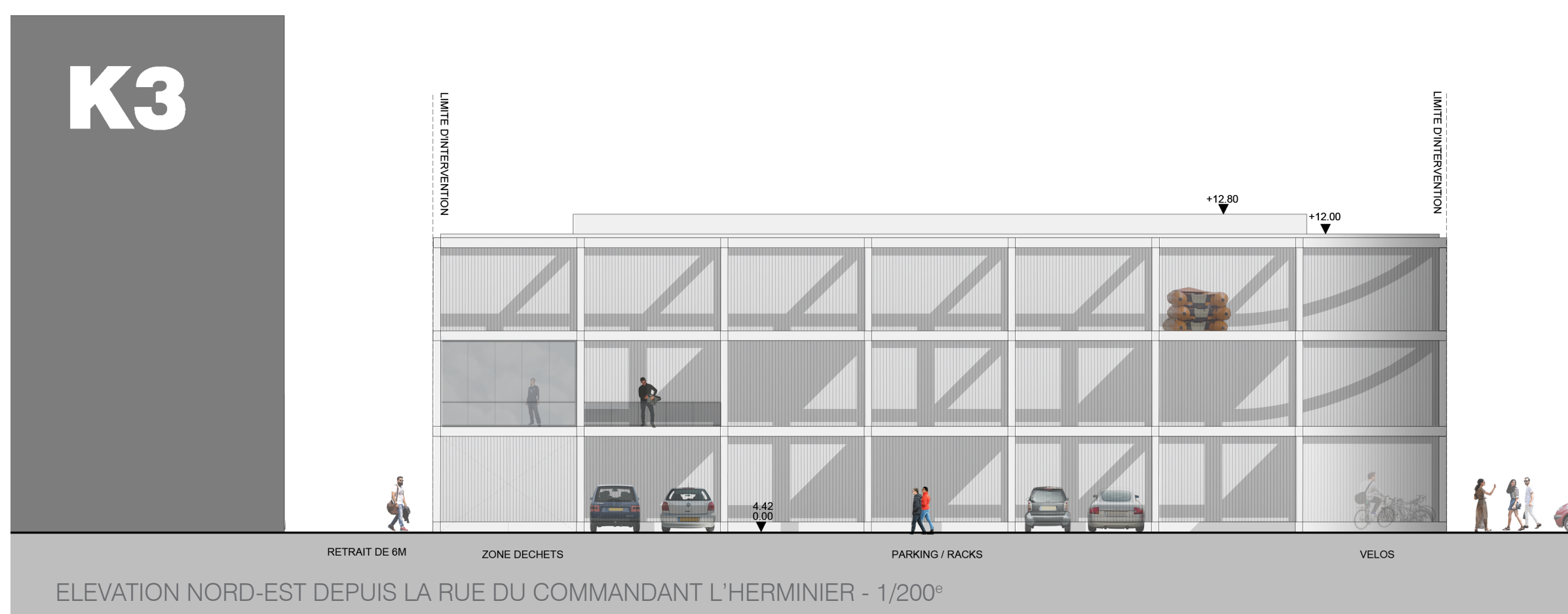
CONSTRUCTION D'UN BATIMENT DEDIE A LA COURSE AU LARGE LORIENT AGGLOMERATION 18 JUIN 2021 - 1/2



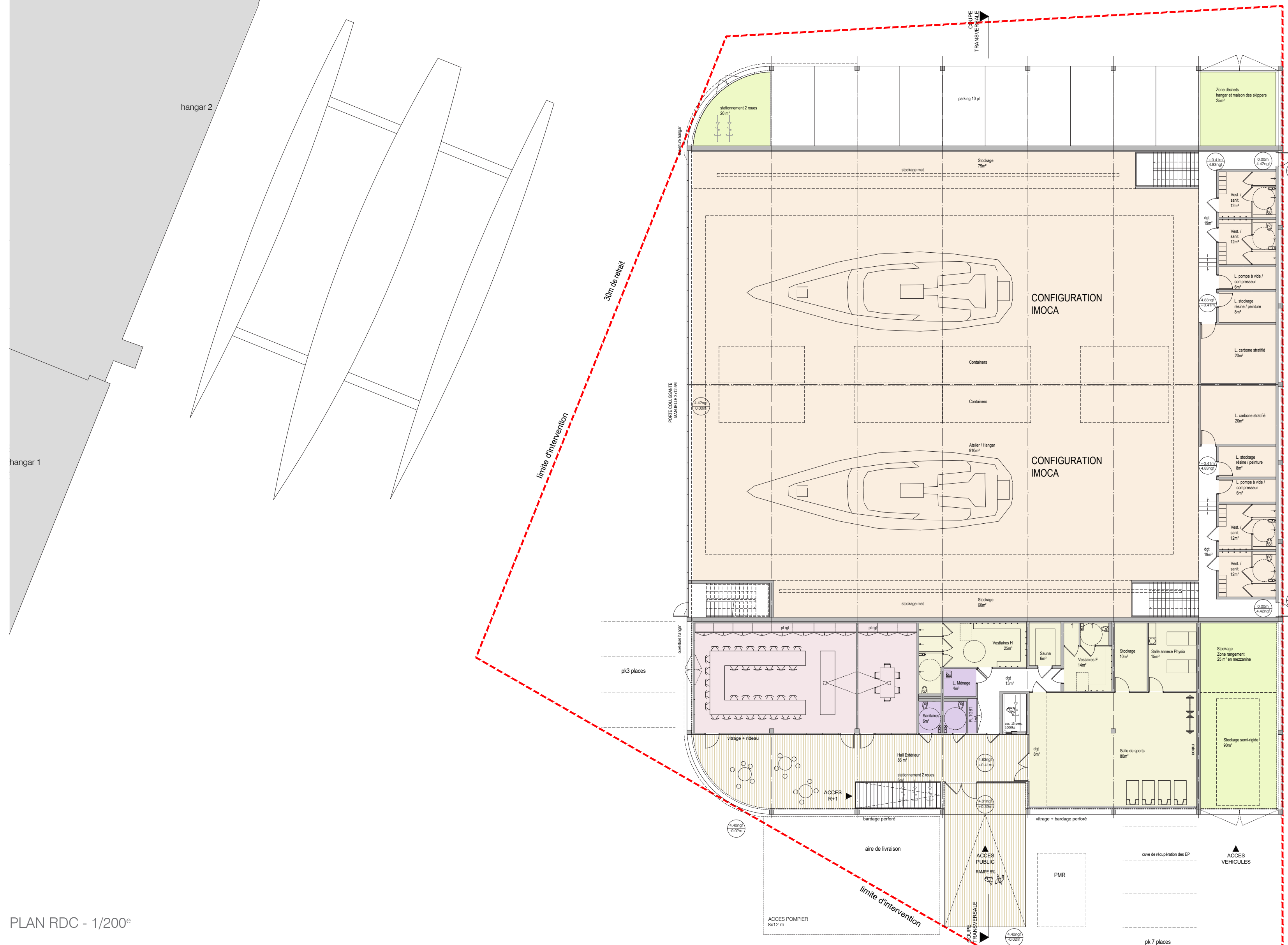
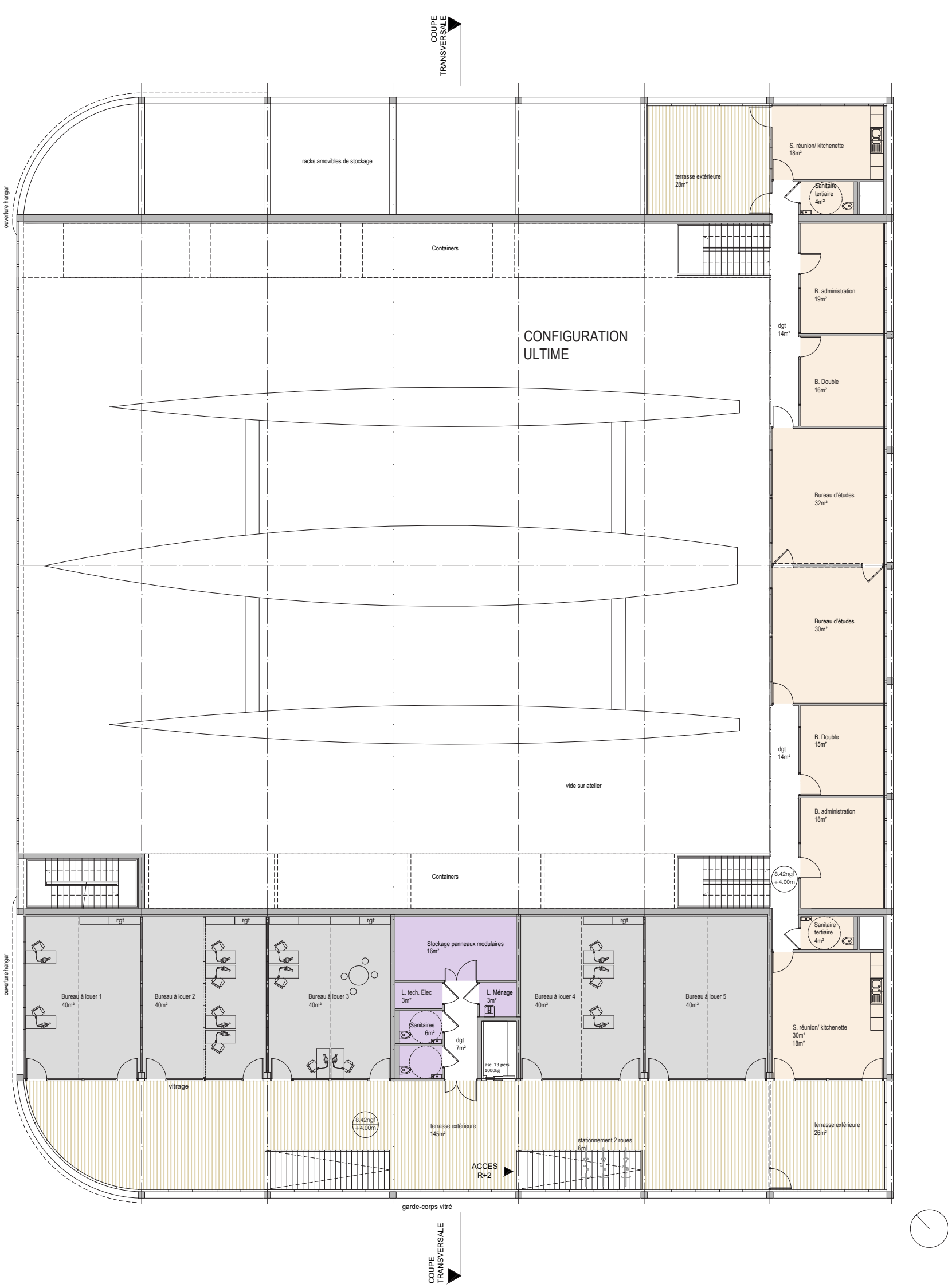
VUE PERSPECTIVE DEPUIS L'INTERIEUR DE LA COURSIVE AU R+2



ELEVATION SUD-EST SUR LA VENELLE K3 - 1/200°



ELEVATION NORD-EST DEPUIS LA RUE DU COMMANDANT L'HERMINIER - 1/200°



2/2

